

Linie M - Play Equipment „Dinophone“

Product Information

Important instructions - Please read carefully!

Scope of Delivery

Items listed below belong to the delivery scope of Linie M - Play Equipment
„The Dinophone “

No	Item	Weight	Unit of Weight
1	Delivery List		
1	Product Description		
1	Drawing		
1	Maintenance Instruction		
2	Dinophone	13	kg/unit
	Length x width x height		
	905 x 235 x 1.495 mm		
1	connecting tube set	8	Kg/unit
	consisting of		
	14 pcs. HT pipe DN 50, length 2.000 mm		
	2 pcs. HT pipe DN 50, length 1.000 mm		
	2 pcs. HT pipe DN 50, length 500 mm		
	1 pc. Double socket DN 50		
	2 pcs. Branch 87° DN 50		
	1 Tube lubricant		

Linie M - Play Equipment „Dinophone“

Product Description **Mounting in solid ground or synthetic fall protection**

Safety Play equipment “Dinophone” meets the requirements of DIN EN 1176: 2017

Age Children 3 years plus and adults

Material Stainless steel, EPDM rubber

Dimensions length 905 mm, width 235 mm, height 1.495 mm

Dimensions from Playing Zone upwards

length 625 mm, width 235 mm, height 870 mm

Minimum Zone Ø 3.700 mm, height 3.200 mm.
Make sure that surrounding surface is in line with minimum zone and hazard free. In case of doubt, please contact your local Technical Supervisory Agency.

Free Fall Height 500 mm

Ground Characteristics

According to EN 1177: 2008

Type of Grounds	Description	Thickness of layer
Concrete/stone		allowed
Bitumen bunned surface		allowed
Topsoil		allowed
Lawn		allowed
woodchips	mechanically shredded wood, without bark and foliage, grain size 5mm to 30mm	300mm above foundation
Bark mulch	shredded bark of coniferous wood, grain size from 20mm to 80mm	300mm above foundation
Sand	without silty or clayey parts, washed, grain size 0.2mm to 2.0mm	300mm above foundation
Gravel	round and washed, grain size 2mm to 8mm	300mm above foundation
Synthetic Fall Protection (set up flush)	with HIC test (refer to DIN EN 1177)	allowed

Foundation	2 pcs. concrete C20/25, length 500 mm x width 500 mm x height 500 mm
Foundation coverage	300 mm
Weight	13 kg / pc.
Maintenance	The Dinophone is made of wear-resistant material. Thus, it is largely maintenance-free and also very suitable for heavily frequented play areas. No special maintenance is required. Any fall protection surfaces that may be present must be checked and maintained regularly.
Scope of Delivery	The Dinophone is delivered disassembled. The scope of delivery includes the necessary connecting tubes. Space requirement of the packed device 2.150 x 1.000 x 500 mm (not stackable). Total weight of the packed device approx. 55 kg, including the plastic connecting tubes

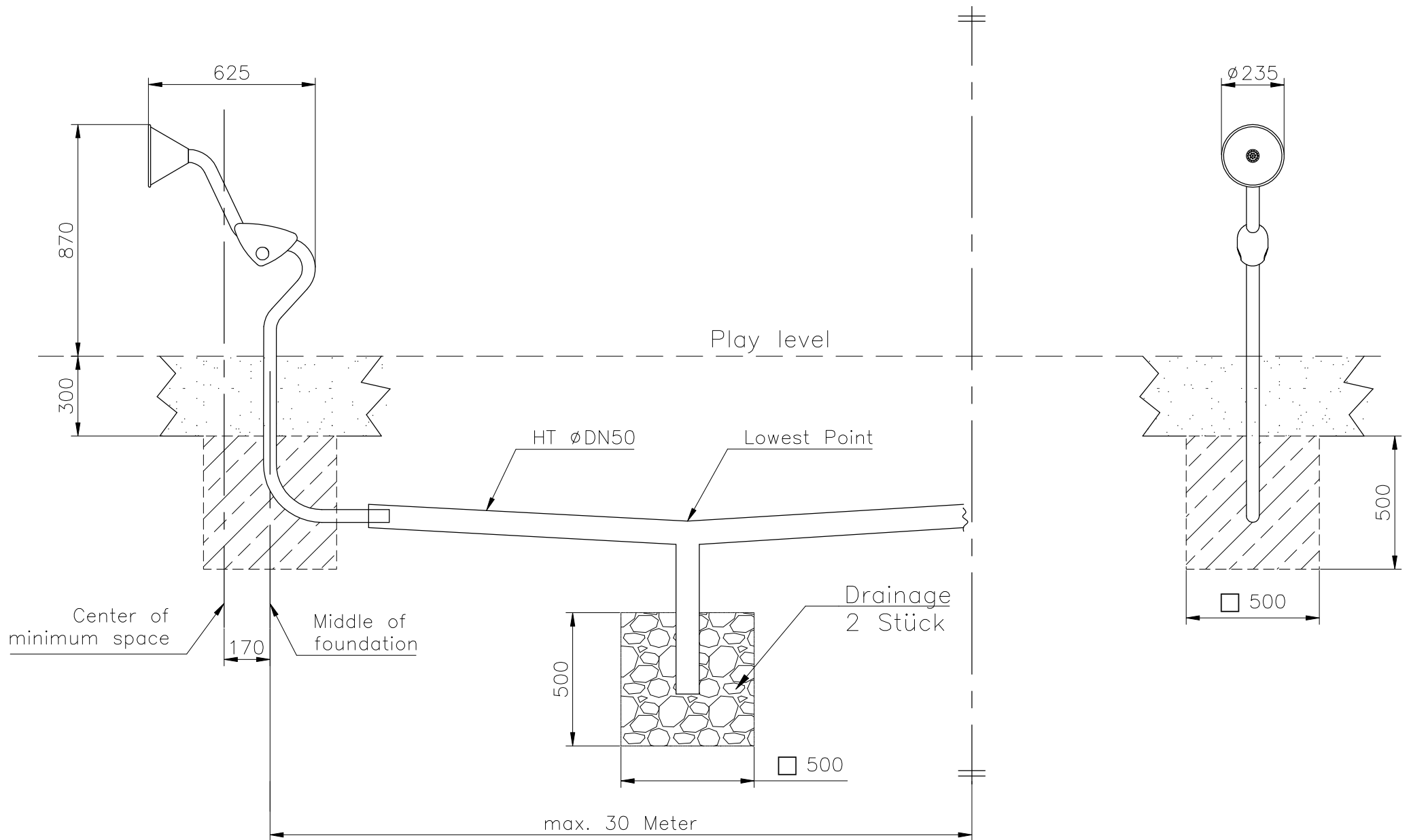
Important Notice

Play equipment Dinophone is being manufactured from stainless steel.

Please make sure to avoid contact with regular steel as particles from the regular steel could cling to the stainless steel that might corrode under the influence of moisture and leave brown spots of rust at the stainless steel surface. In case of such spots please use a smooth abrasive cloth.

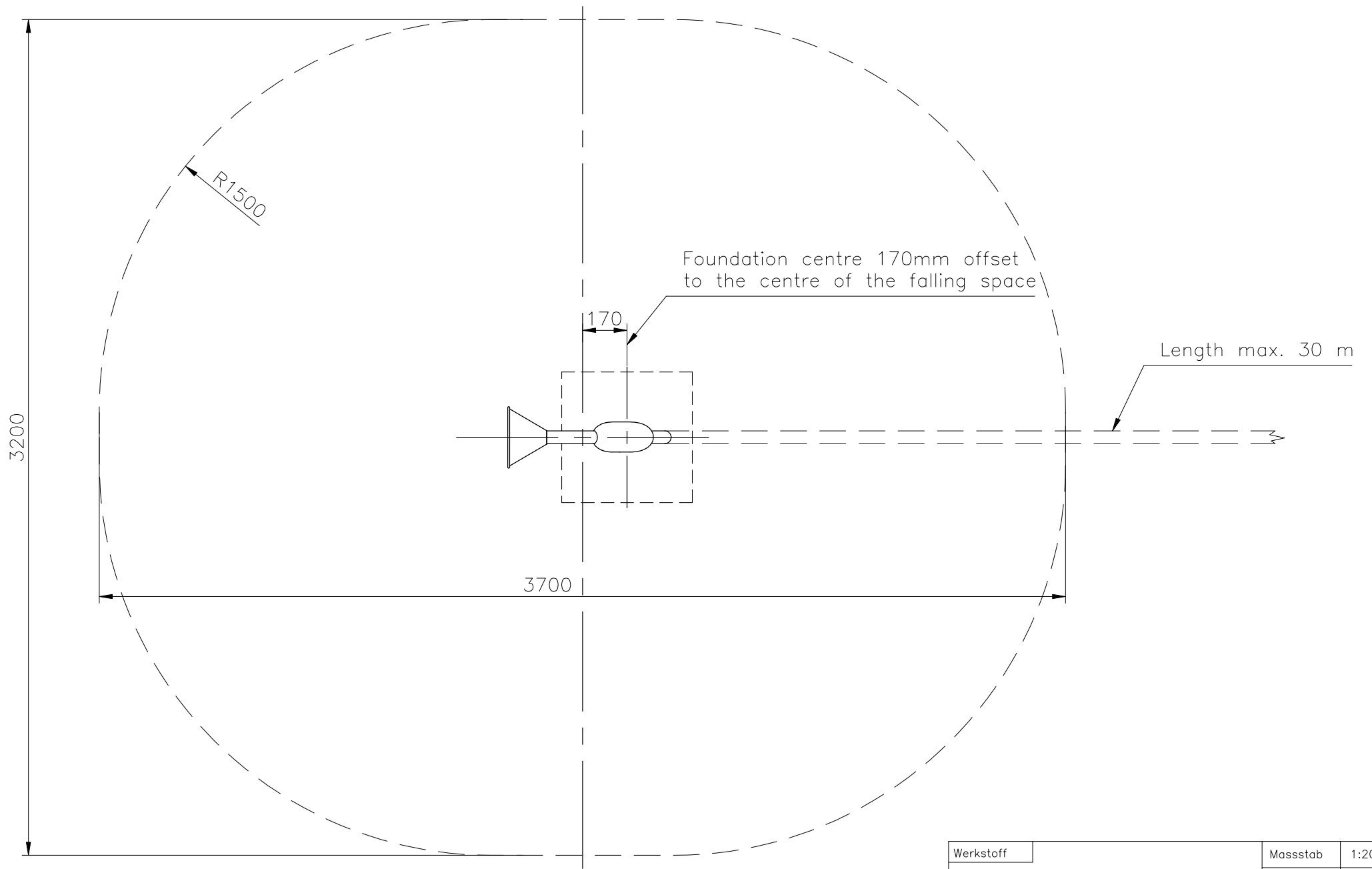
While loading/unloading or transporting the play equipment make sure to use cushioned slings. Don't use steel chains and pad loading forks.

- Pay attention to minimum space (indicated above)
- Make sure that surrounding surface is in line with minimum zone and hazard free. In case of doubt, please contact your local Technical Supervisory Agency.
- Minimum zone must not overlap with Minimum zone of other playground equipment




Foundations:
 Concrete C20/25
 or 3000 PSI
 LxBxH
 500x500x500

Zeichnung Nr.	Werkstoff	Massstab	1:20
—	—	Seite	Pos.:
 Linie M Metall Form Farbe www.linie-m.de		<h1>Dinophone</h1> <h1>Instalation Drawing</h1>	
Datum	13.02.2023	\\Produktdaten\Dinophon\Aufbz Dinophon engl	



Werkstoff		Massstab	1:20
—		Seite	Pos.:


Linie M
 Metall Form Farbe
www.linie-m.de

Bearbeiter	G. Scharnagl
Datum	13.02.2023

Dinophone
Minimum space

Produktdatei\Dinophon\MR Dinophon engl.

Maintenance Instructions according to DIN : EN 1176

1. General

Use of premium material as well as high-quality manufacturing allow Linie M play equipment to have longest maintenance intervals possible according to DIN EN 1176. This is valid for play equipment which is not frequented permanently throughout the day.

Please find below DIN EN 1176 maintenance guidelines.

According to DIN EN 1176 maintenance intervals depend on type of play equipment, material used and other factors, i.e. excessive frequency, vandalism, age of equipment, and environmental factors such as location in coastal areas or air pollution which may lead to shorter maintenance intervals.

Direct inspection of playground equipment should go along with inspection of minimum zone. Remove broken glass bottles or other litter which may lead to injury of body or health. Maintenance of fall protection includes check of its protection properties. Check filling level of loose material as well.

2. Visual Routine Inspection

Visual inspection identifies apparent risks resulting from vandalism, tear and wear and weather conditions. It includes checks of cleanliness, spaces between equipment and ground, filling level of loose material up to equipment mark, quality of ground surface, exposed foundations, sharp edges, missing parts, heavy tear and wear (especially of movable components) and stability.

Inspection as described above may be required on a daily basis in case of playgrounds at risk of vandalism.

3. Operative Inspection

Operative inspection comprises all checks as mentioned above under 1. and 2. Furthermore, every 6 months inspect all parts which are subject to normal tear and wear and check stability by vigorously shaking play equipment.

4. Yearly Main Inspection

The main inspection is intended to check safe-to-operate state of equipment, foundation and surfaces. It includes all checks listed in point 1. to 3. Furthermore, climatic effects, decay, corrosion shall be detected as well as any other change. Uncover foundations and check stability of equipment.

5. Measures to be Taken

Repair defects detected as listed under point 1. to 4. immediately.

If you doubt stability of equipment, uncover foundation and reestablish safe connection between equipment and foundation. Play equipment is made of stainless steel which is rust-proof. In case of contact with regular steel small particles of it may cling to play equipment by abrasion and may lead to brown rust spots when in contact with humidity. Remove them using abrasive cloth (200 grit).

6. Spare Parts

Only use spare parts adequate to original spare part quality in order to guarantee safety and proper functioning of play equipment. Order original spare parts directly from:

Linie M – Metall Form Farbe – GmbH
Industriestraße 8
D - 63674 Altenstadt
Tel.: +49-(0)6074-97120 / -97121
vertrieb@linie-m.de